

201
11.3/4

p740-741 5-7, 13, 23

5. Scale Factor $\frac{2}{6} = \frac{1}{3}$

6. S.F. $\frac{15}{20} = \frac{3}{4}$

7. S.F. $\frac{7}{9}$

Ratio Area $\frac{1}{9}$

$RA = \frac{9}{16}$

$RA = \frac{49}{81}$

$\frac{2}{A} = \frac{1}{9}$

$\frac{9}{16} = \frac{A}{240}$

$\frac{49}{81} = \frac{A}{210}$

$A = 18 \text{ ft}^2$

$A = 135 \text{ cm}^2$

$A = 127.0 \text{ in}^2$

13. R.A. $\frac{7}{28} = \frac{1}{4}$

23. $AA \sim$

$294 = \frac{1}{2} LN \cdot 21$

SF $\frac{1}{2}$

$28 \text{ m} = LN$

$\frac{1}{2} = \frac{4}{XY}$

$28^2 + 21^2 = ML^2$

$35 = ML$

$XY = 8 \text{ cm}$

S.F. $\frac{10}{35} = \frac{2}{7}$

p750-751

Ratio Area $\frac{4}{49}$

11, 12, 17-25

11. $\frac{40}{360} 12\pi$

12. $\frac{120}{360} 28\pi$

17. 150°

18. 210°

1.3π

9.3π

19. $\frac{150}{360} 16\pi$

20.9π

4.2 m

29.3 cm

20. $\frac{210}{360} 16\pi$

29.3π

21. $8.73 = \frac{x}{360} 20\pi$

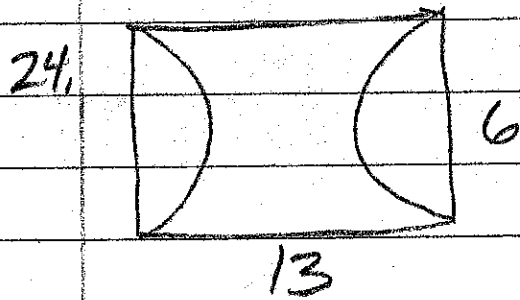
$50.0^\circ = x$

22. $7.5 = \frac{76}{360} C$

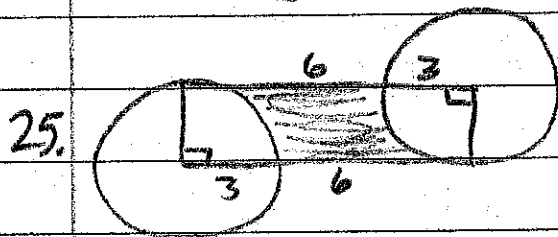
$C = 35.54$

23. $38.95 = \frac{260}{360} 2\pi r$

$8.6u = r$



$2(13) + 6\pi$
 $44.8u$



$6(2) + \frac{180}{360} 6\pi$
 $12 + 3\pi$
 $21.4u$